

**APPLICATIONS**

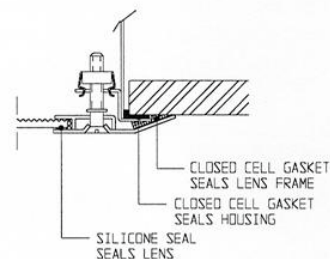
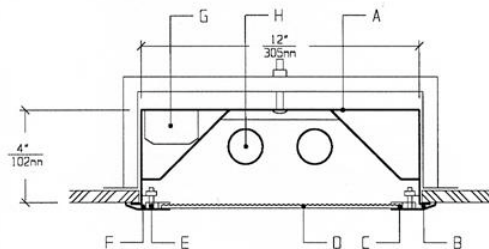
- Cleanrooms
- Food processing centers
- Hospitals
- Pharmaceutical and Biological labs
- Wet Locations

Totally sealed Housings with sealed overlap Lens Frames, silicone set lenses, captive flat head screws, and uniform lighting make CFA Series ideally suited for CLEANROOM, Hospital, Food processing, and Scientific lab areas, where contamination free environment is a must.

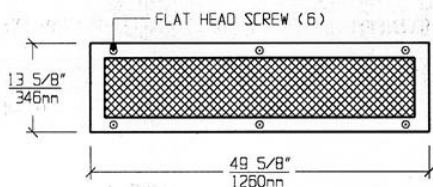
**FEATURES**

- 1' X 4' sealed, painted white, 20ga. Housing
- Suitable for high pressure Hosedown
- Housing Flange is gasketed to ceiling to keep plenum air from entering the room
- Overlap 18ga Lens Frame is gasketed and seals to ceiling
- Lens is silicone sealed to Lens Frame
- Gasketed Access Plate (Optional Internal Junction Box)
- Low brightness Lens installed smooth side to room
- Captive flat head Screws (6)
- Manufactured in accordance to NSF, FDA, USDA and Federal Standard 209D. Class 10 - 100,000 Cleanrooms
- Suitable for Class 10 - Class 100,000 Cleanrooms
- IP-65 rated

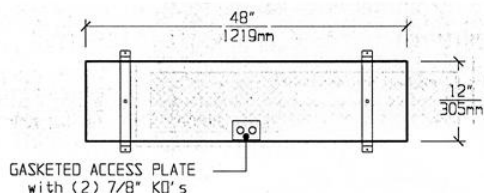
**CROSS SECTION**



**LENS FRAME DIMENSIONS**



**TOP VIEW**



**CEILING CUT-OUT:**  
**12 1/4" X 48 1/4"**

**SPECIFICATIONS**

- |  |  |
|--|--|
| <p><b>A. HOUSING</b> Die formed 20 gauge cold rolled steel Housing, with welded seams. Painted white.</p> <p><b>B. LENS FRAME</b> Die formed one piece 18 gauge cold rolled steel Lens Frame. Painted white.</p> <p><b>C. GASKET</b> Closed cell gaskets and silicone seal prevent air and contaminants from entering the room.</p> <p><b>D. LENS</b> Low brightness Lens with prisms up and smooth side to room for ease of cleaning. (See Options).</p> <p><b>E. FASTENERS</b> Flush, captive stainless steel screws apply even pressure against Lens Frame.</p> | <p><b>F. HINGE</b> Two "shadow free" detachable chains for ease of installation and maintenance.</p> <p><b>G. BALLAST</b> HPF, Class P, Energy saving (See Voltage, Ballast Options).</p> <p><b>H. LAMPS</b> 32W T-8, 28W T-5 or 54W T-5 HO Lamps. See Lamp Options (Lamps by others).</p> <p><b>I. FINISH</b> Polyester Powder coat white finish with 92% reflectance.</p> <p><b>J. UL LISTED</b> Suitable for Wet Locations.</p> |
|--|--|

**LAMP SELECTION**



LAMPS: (1) 32W T-8  
(1) 28W T-5  
(1) 54W T-5HO



LAMPS: (2) 32W T-8  
(2) 28W T-5  
(2) 54W T-5HO



LAMPS: (3) 32W T-8  
(3) 28W T-5  
(3) 54W T-5HO

**ORDERING INFORMATION**

**CFA-14 -**

No. of LAMPS	WATTAGE	VOLTAGE	BALLAST	LENS OPTION	OPTIONS
1=1 Lamps	32=32 Watts	120=120 Volts	EB=Electronic Ballast	12PA=. 125" Prism. Acrylic	TP=Tamperproof Screws
2=2 Lamps	(T-8)	277=277 Volts		15PA=. 156" Prism. Acrylic	GF=GLR Fuse
3=3 Lamps	28=28 Watts	347=347 Volts	MB=Magnetic Ballast	15PG=. 156" Prism. Glass	NL=Night Light (PL-7 or 9)
4=4 Lamps	(T-5)		EB2=(2) Electr. Ballasts	18PP=. 187" Prism. P/C	DB=Dimming Ballast
	54=54 Watts		EBH=<10% THD El. Ballast	UO=UV Absorbing Overlay	EM=Emergency Lighting Ballast
	(T-5HO)			(Other Lens Options available. Consult Factory)	RF=Radio Frequency Interference Filter
					JB=Internal Junction Box
					AHP=Aluminum Housing Painted
					AFP=Aluminum Lens Frame, Painted
					AFA=Aluminum Lens Frame, Anodized
					SHP=Stainless Steel Housing, Painted
				(More than one Option can be specified)	SFP=Stainless Steel Lens Frame, Painted
					SFN=Stainless Steel Lens Frame, Natural

**EXAMPLE: CFA - 14 - 2 - 32 - 277 - EB - 12PA - GF - NL**

**DESCRIPTION:** CFA - 14 = Series CFA, 1 foot by 4 feet nominal size  
 2 = 2 Lamps  
 32 = 32 Watts T-8 Lamps  
 277 = 277 Volt Operation  
 EB = Electronic Ballast  
 12PA = .125" Thick Prismatic Acrylic  
 GF = GLR Fuse  
 NL = Night Light for PL-7 or 9

FIXTURE TYPE		COMMENTS
CATALOG NUMBER	CFA-14-	
JOB NAME		
APPROVAL		
DATE		

Dimensions and Specifications subject to change without notice  
 Fixture guaranteed for one year against mechanical defects in manufacture.  
 Copyright 2-10 CFA-14