

LIGHTING FOR COMPLEX ENVIRONMENTS

2' X 4'

APPLICATIONS

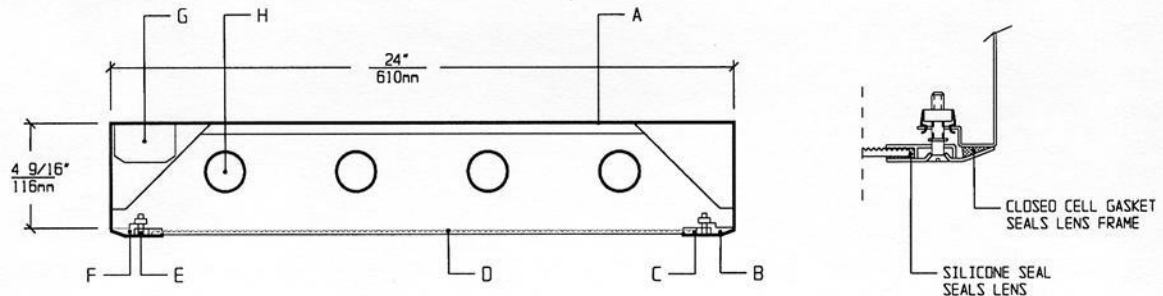
- Cleanrooms
- Food processing centers
- Hospitals
- Pharmaceutical and Biological labs
- Wet Locations

Totally sealed Housings with sealed overlap Lens Frames, silicone set lenses, captive flat head screws, and uniform lighting make CSA Series ideally suited for CLEANROOM, Hospital, Food processing, and Scientific lab areas, where contamination free environment is a must.

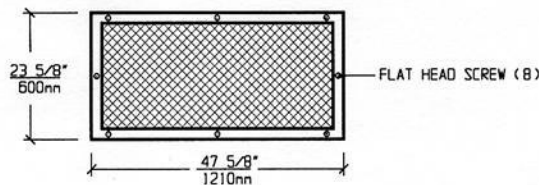
FEATURES

- 2' X 4' low profile, sealed, painted white, 20ga. Housing
- Suitable for high pressure Hosedown
- (4) gasketed mounting holes
- Overlap 18ga. Lens Frame is gasketed and seals to grid
- Lens is silicone sealed to Lens Frame
- Gasketed Access Plate (Optional Internal Junction Box)
- Low brightness Lens installed smooth side to room
- Captive flat head Screws (8)
- Manufactured in accordance to NSF, FDA, USDA and Federal Standard 209D
- Suitable for Class 10 - Class 100,000 Cleanrooms
- IP-65 rated

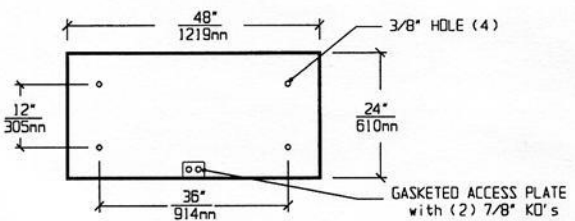
CROSS SECTION



LENS FRAME DIMENSIONS



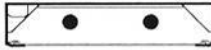
TOP VIEW



SPECIFICATIONS

A. HOUSING	Die formed 20 gauge cold rolled steel Housing, with welded seams. Painted white.	F. HINGE	Two "shadow free" detachable chains for ease of installation and maintenance.
B. LENS FRAME	Die formed one piece 18 gauge cold rolled steel Lens Frame.	G. BALLAST	HPF, Class P, Energy saving Ballast (See Voltage, Ballast Options).
C. GASKET	Closed cell gaskets and silicone seal prevent air and contaminants from entering the room.	H. LAMPS	32W T-8, 28W T-5 or 54W T-5 HO Lamps. See Lamp Options (Lamps by others).
D. LENS	Low brightness Lens with prisms up and smooth side to room for ease of cleaning. (See Options).	I. FINISH	Polyester Powder coat white finish with 92% reflectance.
E. FASTENERS	Flush, captive stainless steel screws apply even pressure against Lens Frame.	J. UL LISTED	Suitable for Wet Locations.

LAMP SELECTION



LAMPS: (2) 32W T-8
(2) 28W T-5
(2) 54W T-5HO



LAMPS: (3) 32W T-8
(3) 28W T-5
(3) 54W T-5HO



LAMPS: (4) 32W T-8
(4) 28W T-5
(4) 54W T-5HO

ORDERING INFORMATION

CSA-24 -

No. of LAMPS	WATTAGE	VOLTAGE	BALLAST	LENS OPTION	OPTIONS
2=2 Lamps	32=32 Watts	120=120 Volts	EB=Electronic Ballast	12PA=.125" Prism. Acrylic	TP=Tamperproof Screws
3=3 Lamps	(T-8)	277=277 Volts		15PA=.156" Prism. Acrylic	GF=GLR Fuse
4=4 Lamps	28=28 Watts	347=347 Volts	MB=Magnetic Ballast	15PG=.156" Prism. Glass	NL=Night Light (PL-7 or 9)
6=6 Lamps	(T-5)		EB2=(2) Electr. Ballasts	18PP=.187" Prism. P/C	DB=Dimming Ballast
	54=54 Watts (T-5HO)		EBH=<10% THD El. Ballast	UO=UV Absorbing Overlay	EM=Emergency Lighting
				(Other Lens Options available. Consult Factory)	CW=Cold Weather Ballast
					RF=Radio Frequency Interference Filter
					JB=Internal Junction Box
					AHP=Aluminum Housing Painted
					AFP=Aluminum Lens Frame, Painted
					AFA=Aluminum Lens Frame, Anodized
					SHP=Stainless Steel Housing, Painted
				(More than one Option can be specified)	SFP=Stainless Steel Lens Frame, Painted
					SFN=Stainless Steel Lens Frame, Natural

EXAMPLE: CSA - 24 - 4 - 32 - 277 - EB - 12PA - GF - NL

DESCRIPTION: **CSA - 24** = Series CSA, 2 feet by 4 feet nominal size
4 = 4 Lamps
32 = 32 Watts T-8 Lamps
277 = 277 Volt Operation
EB = Electronic Ballast
12PA = .125" Thick Prismatic Acrylic
GF = GLR Fuse
NL = Night Light for PL-7 or 9

FIXTURE TYPE		COMMENTS
CATALOG NUMBER	CSA-24-	
JOB NAME		
APPROVAL		
DATE		

Dimensions and Specifications subject to change without notice
 Fixture guaranteed for one year against mechanical defects in manufacture.
 Copyright 2-10 CSA-24