

LIGHTING FOR COMPLEX ENVIRONMENTS

Single Face

APPLICATIONS

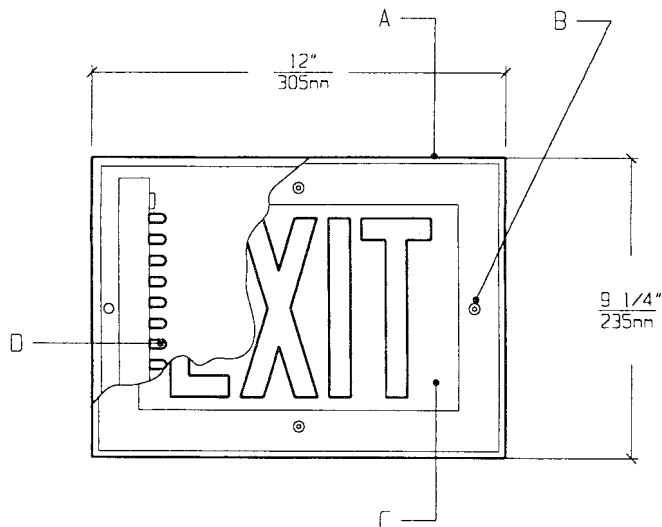
- Prison Day Rooms and Common Areas
- Apartments / Condominiums / Public Housing
- Convenience Stores
- Government Facilities
- Hospitals

Heavy gauge housings with concealed hinges, unbreakable lenses, tamperproof screws, absence of cracks and crevices, and L.E.D light sources, make DXL Series exits ideally suited for DETENTION and SECURITY areas, where physical attack or abuse are expected.

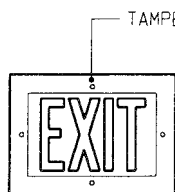
FEATURES

- ♦ 14 gauge die formed Housing
- ♦ Maximum, Medium, Minimum or Super Maximum security
- ♦ Polycarbonate Lens provides uniform illumination
- ♦ Long lasting L.E.D. light source
- ♦ Tamperproof Screws with captive cage nuts
- ♦ Ceiling or Wall mounted
- ♦ Maintenance free, one time installation
- ♦ Removable Power Tray
- ♦ Lens secured to Lens Housing by through studs and heavy gauge steel rails
- ♦ Non-corrosive durable coating

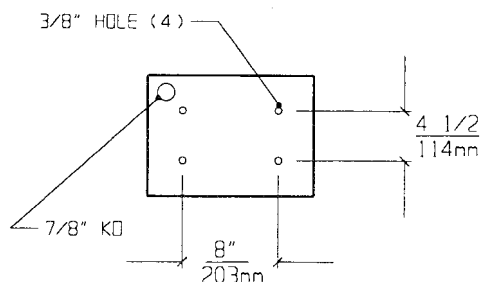
CROSS SECTION



LENS FRAME DIMENSIONS



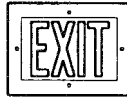
MOUNTING DIMENSIONS



SPECIFICATIONS

<p>A. HOUSING 14 gauge die formed cold rolled steel Housing with welded End Caps.</p> <p>B. FASTENERS Stainless Steel tamperproof fasteners. (Torx head standard. For others see Options).</p> <p>C. LENS 3/16" thick clear polycarbonate Lens for even illumination.</p>	<p>D. LAMPS Long lasting L.E.D. Lamps. (Provided).</p> <p>E. FINISH Polyester Powder coat white finish with 92% reflectance</p> <p>F. U.L. LISTED Suitable for Damp Locations. Wet Locations construction available.</p>
--	---

LAMP SELECTION



LAMPS: L.E.D.

ORDERING INFORMATION

DXL - 1 -	PANEL COLORS	VOLTAGE	OPTIONS
	RW =Red letters / White face	120 = 120 Volts	LA =Left Arrow
	RB =Red letters / Black face	277 =277 Volts	RA =Right Arrow
	WR =White letters / Red face	347 =347 Volts	DA =Double Arrow
	WB =White letters / Black face		

EXAMPLE: DXL - 1 - RW - 120 - LA

DESCRIPTION: DXL-1 = Series DXL, Single Face
 RW = Red on White lettering
 120 = 120 Volt Operation
 LA = Left Arrow

FIXTURE TYPE		COMMENTS
CATALOG NUMBER	DXL-1-	
JOB NAME		
APPROVAL		
DATE		

Dimensions and Specifications subject to change without notice
 Fixture guaranteed for one year against mechanical defects in manufacture.
 2-97 DXL-1