

**LIGHTING FOR COMPLEX ENVIRONMENTS**

**2' X 2'**

**APPLICATIONS**

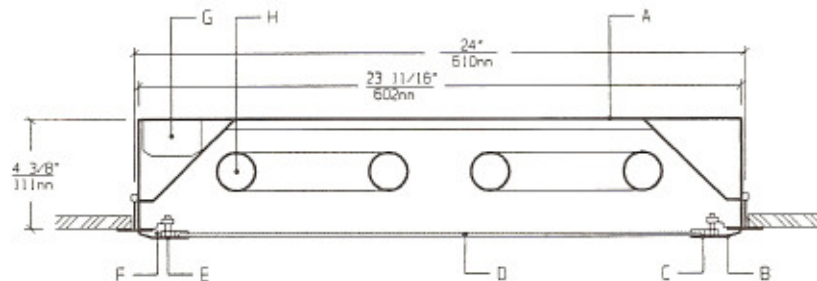
- Schools / Universities
- Apartments / Condominiums / Public Housing
- Convenience Stores
- Government Facilities
- Hospitals

Welded housings with unbreakable lenses and tamperproof screws help VGT Series withstand severe punishment, and make them ideally suited for VANDAL and HIGH ABUSE areas, where deliberate tampering is expected.

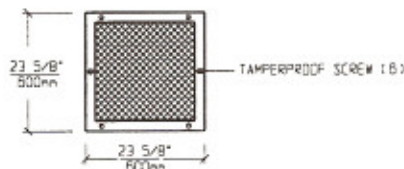
**FEATURES**

- ♦ 20 gauge die formed Housing, painted white
- ♦ 2 feet by 2 feet nominal Housing size
- ♦ Overlap one-piece 18 gauge Lens Frame
- ♦ Same Housing fits 1", 1-1/2" and 2" standard T-grid ceiling
- ♦ Captive Tamperproof Screws with captive cage nuts
- ♦ High Impact low brightness Lens (See Options)
- ♦ Non-corrosive durable coating
- ♦ Maintenance free, one time installation
- ♦ Stands up to physical impact and tampering
- ♦ Suitable for high pressure Hosedown

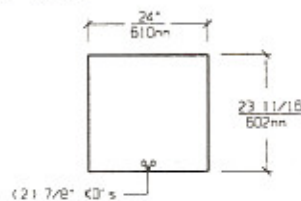
**CROSS SECTION**



**LENS FRAME DIMENSIONS**



**TOP VIEW**



**SPECIFICATIONS**

|   |   |
|---|---|
| <p><b>A. HOUSING</b> Die formed 20 gauge cold rolled steel Housing, with welded seams.</p> <p><b>B. LENS FRAME</b> Die formed one piece 18 gauge cold rolled steel Lens Frame.</p> <p><b>C. GASKET</b> Closed cell gaskets prevent moisture from entering the fixture.</p> <p><b>D. LENS</b> Low brightness high impact Lens (See Options).</p> <p><b>E. FASTENERS</b> Captive stainless steel tamperproof screws apply even pressure against Lens Frame.</p> | <p><b>F. HINGE</b> Two "shadow free" detachable chains for ease of installation and maintenance.</p> <p><b>G. BALLAST</b> HPF, Class P, Energy saving (See Voltage, Ballast Options).</p> <p><b>H. LAMPS</b> 17W T-8, 20W T-12, 40W Biax or 40W U-Lamps. See Lamp Options. (Lamps by others).</p> <p><b>I. FINISH</b> Polyester Powder coat white finish with 92% reflectance.</p> <p><b>J. UL LISTED</b> Suitable for Wet Locations.</p> |
|---|---|

LAMP SELECTION



LAMPS: (2) 17W T-8  
(2) 20W T-12



LAMPS: (3) 17W T-8  
(3) 20W T-12



LAMPS: (4) 17W T-8  
(4) 20W T-12



LAMPS: (2) 40W U (6")



LAMPS: (2) 40W BIAx



LAMPS: (3) 40W BIAx

ORDERING INFORMATION

VGT - 22 -

| No. of LAMPS                        | WATTAGE   | VOLTAGE                        | BALLAST  | LENS OPTION  | OPTIONS   |
|-------------------------------------|---|--------------------------------|--|--|---|
| 2=2 Lamps<br>(All)                  | 17=17 Watts<br>(T- 8)   | 120=120 Volts<br>277=277 Volts | EB=Electronic<br>Ballast                                   | 12PA=.125"Prism. Acrylic<br>15PA=.156"Prism. Acrylic                               | EM=Emergency Lighting<br>GF=GLR Fuse  |
| 3=3 Lamps<br>(Except U)             | 20=20 Watts<br>(T-12)   | 347=347 Volts                  | MB=Magnetic<br>Ballast                                     | 15PG=.156"Prism. Glass<br>18PP=.187"Prism. P/C                                     | NL=Night Light(PL-7or 9)<br>DB=Dimming Ballast  |
| 4=4 Lamps<br>(Except U<br>and Biax) | 40U=40 Watts U<br>(6" spacing)<br>40BX=40 Watts<br>Biax Twin Tube |                                | EB2=(2) Electr.<br>Ballasts<br>EBH=<10% THD<br>El. Ballast | UO = UV Absorbing<br>Overlay<br>(Other Lens Options<br>available. Consult Factory) | CW=Cold Weather<br>Ballast<br>RF=Radio Frequency<br>Interference Filter<br>AHP=Aluminum Housing<br>Painted<br>AFP=Aluminum Lens<br>Frame, Painted<br>AFA=Aluminum Lens<br>Frame, Anodized<br>SHP=Stainless Steel<br>Housing, Painted<br>SFP=Stainless Steel<br>Lens Frame, Painted<br>SFN=Stainless Steel<br>Lens Frame, Natural<br>AH=Allen Head Screws<br>OH=Oval Head Screws |

(More than one Option  
can be specified)

EXAMPLE: VGT - 22 - 2 - 40U - 277 - EB - 15PG - GF - NL

DESCRIPTION: VGT-22 = Series VGT, 2 feet by 2 feet nominal size  
 2 = 2 Lamps  
 40U = 40 Watts U Lamps (6" Spacing)  
 277 = 277 Volt Operation  
 EB = Electronic Ballast  
 15PG = .156" Thick Prismatic Tempered Glass  
 GF = GLR Fuse  
 NL = Night Light for PL - 7 or 9

| FIXTURE TYPE   |         | COMMENTS |
|----------------|---------|----------|
| CATALOG NUMBER | VGT-22- |          |
| JOB NAME       |         |          |
| APPROVAL       |         |          |
| DATE           |         |          |

Dimensions and Specifications subject to change without notice  
 Fixture guaranteed for one year against mechanical defects in manufacture.  
 2-97 VGT-22