

LIGHTING FOR COMPLEX ENVIRONMENTS

2' X 2'

APPLICATIONS

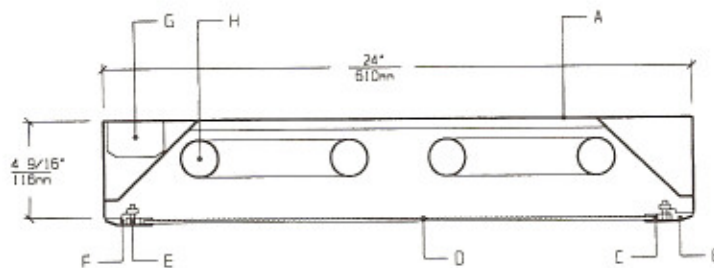
- Schools / Universities
- Apartments / Condominiums / Public Housing
- Convenience Stores
- Government Facilities
- Hospitals

Welded housings with unbreakable lenses and tamperproof screws help VST Series withstand severe punishment, and make them ideally suited for VANDAL and HIGH ABUSE areas, where deliberate tampering is expected.

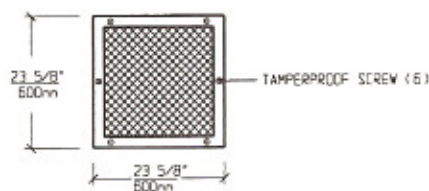
FEATURES

- ♦ 20 gauge die formed Housing, painted white
- ♦ 2 feet by 2 feet nominal Housing size
- ♦ Overlap one-piece 18 gauge steel Lens Frame
- ♦ Suitable for high pressure Hosedown
- ♦ Captive Tamperproof Screws with captive cage nuts
- ♦ High Impact low brightness Lens (See Options)
- ♦ Non-corrosive durable coating
- ♦ Maintenance free, one time installation
- ♦ Stands up to physical impact and tampering

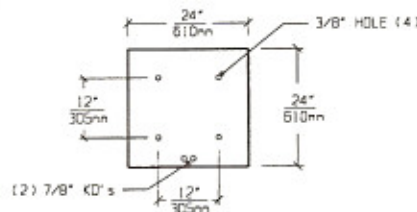
CROSS SECTION



LENS FRAME DIMENSIONS



TOP VIEW



SPECIFICATIONS

<p>A. HOUSING Die formed 20 gauge cold rolled steel Housing, with welded seams.</p> <p>B. LENS FRAME Die formed one piece 18 gauge cold rolled steel Lens Frame.</p> <p>C. GASKET Closed cell gaskets prevent moisture from entering the fixture.</p> <p>D. LENS Low brightness high impact Lens (See Options).</p> <p>E. FASTENERS Captive stainless steel tamperproof screws apply even pressure against Lens Frame.</p>	<p>F. HINGE Two "shadow free" detachable chains for ease of installation and maintenance.</p> <p>G. BALLAST HPF, Class P, Energy saving (See Voltage, Ballast Options).</p> <p>H. LAMPS 17W T-8, 20W T-12, 40W Biac or 40W U Lamps. See Lamp Options. (Lamps by others).</p> <p>I. FINISH Polyester Powder coat white finish with 92% reflectance.</p> <p>J. UL LISTED Suitable for Wet Locations.</p>
---------------------------------------------------------------------------------------------------------------------------------------------------------------------------------------------------------------------------------------------------------------------------------------------------------------------------------------------------------------------------------------------------------------------------------------------------------------	-------------------------------------------------------------------------------------------------------------------------------------------------------------------------------------------------------------------------------------------------------------------------------------------------------------------------------------------------------------------------------------------------------------------------------------------

LAMP SELECTION



LAMPS: (2) 17W T-8
(2) 20W T-12



LAMPS: (3) 17W T-8
(3) 20W T-12



LAMPS: (4) 17W T-8
(4) 20W T-12



LAMPS: (2) 40W U (6")



LAMPS: (2) 40W BIA-X



LAMPS: (3) 40W BIA-X

ORDERING INFORMATION

VST - 22 -

No. of LAMPS	WATTAGE	VOLTAGE	BALLAST	LENS OPTION	OPTIONS
2=2 Lamps (All)	17=17 Watts (T-8)	120=120 Volts 277=277 Volts	EB=Electronic Ballast	12PA=.125"Prism. Acrylic 15PA=.156"Prism. Acrylic	EM=Emergency Lighting GF=GLR Fuse
3=3 Lamps (Except U)	20=20 Watts (T-12)	347=347 Volts	MB=Magnetic Ballast	15PG=.156"Prism. Glass 18PP=.187"Prism. P/C	NL=Night Light(PL-7or 9) DB=Dimming Ballast
4=4 Lamps (Except U and Bia-x)	40U=40 Watts U (6" spacing) 40BX=40 Watts Bia-x Twin Tube		EB2=(2) Electr. Ballasts EBH=<10% THD El. Ballast	UO = UV Absorbing Overlay (Other Lens Options available. Consult Factory)	CW=Cold Weather Ballast RF=Radio Frequency Interference Filter AHP=Aluminum Housing Painted AFP=Aluminum Lens Frame, Painted AFA=Aluminum Lens Frame, Anodized SHP=Stainless Steel Housing, Painted SFP=Stainless Steel Lens Frame, Painted SFN=Stainless Steel Lens Frame, Natural AH=Allen Head Screws OH=Oval Head Screws

(More than one Option
can be specified)

EXAMPLE: VST - 22 - 2 - 40U - 277 - EB - 15PG - GF - NL

DESCRIPTION: VST-22 = Series VST, 2 feet by 2 feet nominal size
 2 = 2 Lamps
 40U = 40 Watts U Lamps (6" Spacing)
 277 = 277 Volt Operation
 EB = Electronic Ballast
 15PG = .156" Thick Prismatic Tempered Glass
 GF = GLR Fuse
 NL = Night Light for PL - 7 or 9

FIXTURE TYPE		COMMENTS
CATALOG NUMBER	VST-22-	
JOB NAME		
APPROVAL		
DATE		

Dimensions and Specifications subject to change without notice
 Fixture guaranteed for one year against mechanical defects in manufacture.
 2-97 VST-22